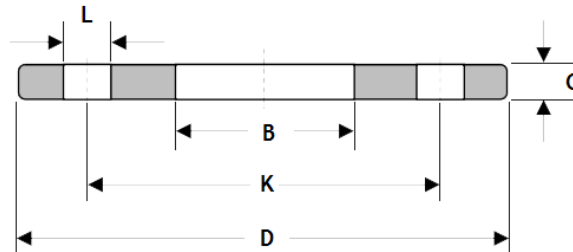




BDE (NORTHAMPTON) LTD

(BS10) TABLE E FLANGE 316



- BS10 TABLE E FLANGE - BORED FOR OD TUBE**

SIZE	1"	1.5"	2"	2.5"	3"	4"
B	26.20	39.00	51.70	64.30	77.00	102.40
K	82.60	98.40	114.30	127.00	146.00	177.60
D	114.30	133.40	152.40	165.10	184.10	215.00
L	14.29	14.29	17.46	17.46	17.46	17.46
C	7.14	8.73	9.52	10.31	11.11	12.70
HOLES	4	4	4	4	4	8

- BS10 TABLE E FLANGE - BORED FOR NB PIPE**

SIZE	1"	1.5"	2"	2.5"	3"	4"
B	34.50	49.50	61.50	74.70	90.50	116.00
K	82.60	98.40	114.30	127.00	146.00	177.60
D	114.30	133.40	152.40	165.10	184.10	215.00
L	14.29	14.29	17.46	17.46	17.46	17.46
C	7.14	8.73	9.52	10.31	11.11	12.70
HOLES	4	4	4	4	4	8

- BS10 TABLE E FLANGE - BSPP THREADED**

SIZE	1"	1.5"	2"	2.5"	3"	4"
K	82.60	98.40	114.30	127.00	146.00	177.60
D	114.30	133.40	152.40	165.10	184.10	215.00
L	14.29	14.29	17.46	17.46	17.46	17.46
C	7.14	8.73	9.52	10.31	11.11	12.70
HOLES	4	4	4	4	4	8

Parallel thread to suit BSP male