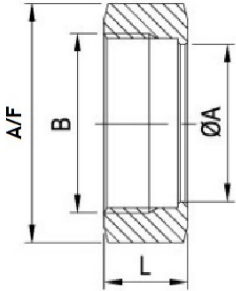




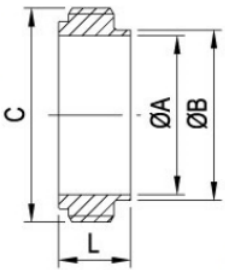
BDE (NORTHAMPTON) LTD

IDF UNION (BS4825 PT4)



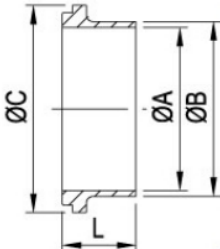
- IDF HEX NUT 304**

SIZE	1"	1.5"	2"	2.5"	3"	4"
A	30.50	43.50	57.00	70.70	83.30	110.00
B	34.34	47.86	61.37	74.88	84.40	122.05
A/F	46.00	60.00	75.00	90.00	105.00	133.00
L	30.00	30.00	30.00	30.00	30.00	34.90



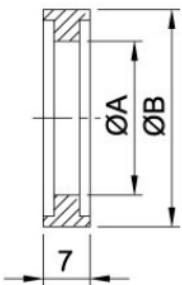
- IDF WELD MALE 316**

SIZE	1"	1.5"	2"	2.5"	3"	4"
A	22.20	34.90	47.60	60.30	73.00	97.60
B	25.40	38.10	50.80	63.50	76.20	101.60
C	37.13	50.65	64.16	77.76	91.19	125.90
L	21.50	21.50	21.50	21.50	21.50	30.00



- IDF WELD LINER 316**

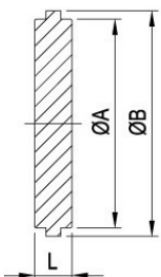
SIZE	1"	1.5"	2"	2.5"	3"	4"
A	22.20	34.90	47.60	60.30	73.00	97.60
B	25.40	38.10	50.80	63.50	76.20	101.60
C	33.80	47.00	60.50	74.00	87.50	114.10
L	21.50	21.50	21.50	21.50	21.50	30.00



- IDF JOINT RING - NITRILE**

SIZE	1"	1.5"	2"	2.5"	3"	4"
A	23.00	36.00	49.00	60.70	73.20	98.00
B	32.50	46.00	59.40	73.20	86.50	119.00

EPDM - ex stock



- IDF BLANK LINER 316**

SIZE	1"	1.5"	2"	2.5"	3"	4"
A	29.20	42.70	56.20	69.90	82.60	111.10
B	33.80	47.00	60.50	74.00	87.50	120.60
L	10.50	10.50	10.50	10.50	10.50	12.60