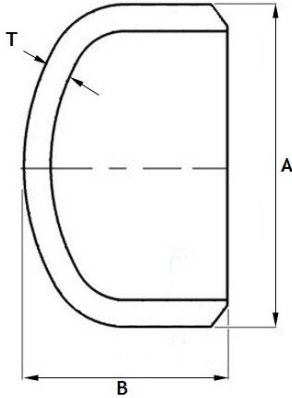




BDE (NORTHAMPTON) LTD



BUTT WELD END CAPS

- MANUFACTURED TO ASTM-A403/ANSI B16.9
- STOCKED IN 316L
- SMALLER/LARGER SIZES AVAILABLE ON REQUEST

**FLANGES & FITTINGS
AVAILABLE TO SUIT EX-STOCK**

• NB SCH 10 - END CAP

SIZE	2"	2.5"	3"	4"	6"
A	60.3	73.0	88.9	114.3	168.3
B	38.1	50.4	63.5	76.2	101.6
T	2.77	3.05	3.05	3.05	3.40

• NB SCH 40 - END CAP

SIZE	2"	2.5"	3"	4"	6"
A	60.3	73.0	88.9	114.3	168.3
B	38.1	50.4	63.5	76.2	101.6
T	3.91	5.16	5.49	6.02	7.11