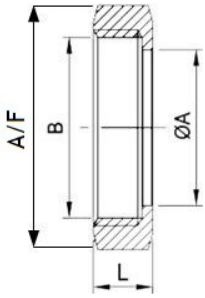




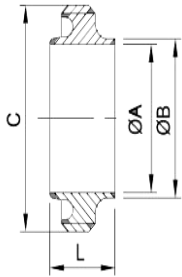
# BDE (NORTHAMPTON) LTD

## RJT UNION (BS4825 PT5)



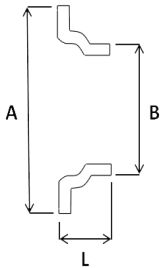
- RJT HEX NUT 304**

SIZE	1"	1.5"	2"	2.5"	3"	4"
A	33.45	46.00	58.67	71.40	84.10	109.70
B	42.40	55.00	68.00	80.00	92.00	118.00
A/F	51.00	65.00	79.00	92.00	105.00	129.00
L	22.00	22.00	22.00	22.00	22.00	22.00



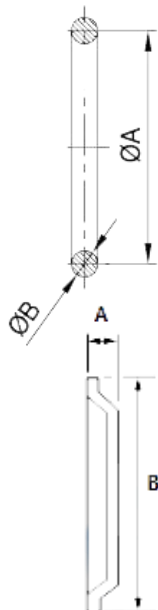
- RJT WELD MALE 316**

SIZE	1"	1.5"	2"	2.5"	3"	4"
A	21.10	34.80	47.50	60.20	72.90	97.60
B	25.40	38.10	50.80	63.50	76.20	101.60
C	45.72	58.42	72.72	85.42	98.12	123.52
L	27.00	27.00	27.00	27.00	27.00	27.00



- RJT PRESSED WELD LINER 316**

SIZE	1"	1.5"	2"	2.5"	3"	4"
A	41.40	54.00	66.70	79.40	92.10	117.50
B	25.40	38.10	50.80	63.5	76.20	101.60
L	12.70	12.70	12.70	12.70	12.70	12.70



- RJT JOINT RING - NITRILE**

SIZE	1"	1.5"	2"	2.5"	3"	4"
A	33.30	46.00	58.70	71.40	84.10	109.50
B	6.60	6.60	6.60	6.60	6.60	6.60

VITON & EPDM ALSO EX STOCK.  
PTFE SOLID CAN ALSO BE SUPPLIED.

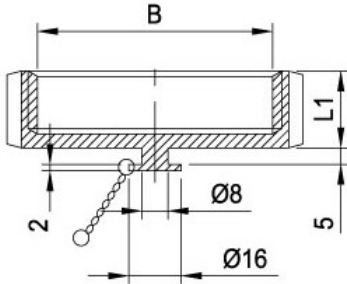
- RJT PRESSED BLANK LINER 316**

SIZE	1"	1.5"	2"	2.5"	3"	4"
A	8.70	8.70	8.70	8.70	8.70	8.70
B	41.30	54.00	66.70	79.40	92.10	117.50



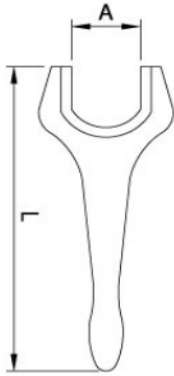
**BDE (NORTHAMPTON) LTD**

## RJT UNION (BS4825 PT5)



- RJT BLANK NUT & CHAIN 316**

SIZE	1"	1.5"	2"	2.5"	3"	4"
<b>B</b>	46.66 x 8	54.96 x 8	67.92 x 6	80.62 x 6	93.32 x 6	118.72 x 6
	TPI WHIT	TPI WHIT	TPI WHIT	TPI WHIT	TPI WHIT	TPI WHIT
<b>L1</b>	23.50	23.50	23.50	23.50	23.50	23.50



- RJT CAST ALUMINIUM SPANNER**

SIZE	1"	1.5"	2"	2.5"	3"	4"
<b>A</b>	51.80	66.00	80.40	93.20	106.30	121.50
<b>B</b>	240.00	288.00	300.00	326.00	440.00	448.00

### ALSO AVAILABLE:

- RJT REDUCING LINERS
- RJT/BSP ADAPTORS 316
- RJT MALE/FEMALE ELBOWS 316
- RJT HOSE LINERS
- RJT MALE HOSETAIL
- MACHINED LINERS