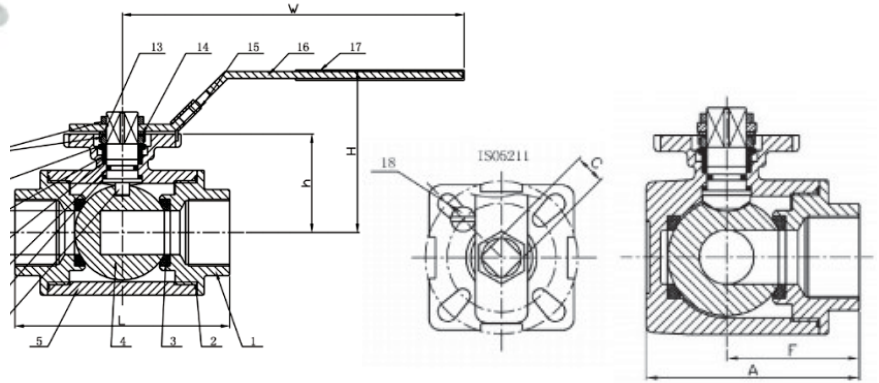




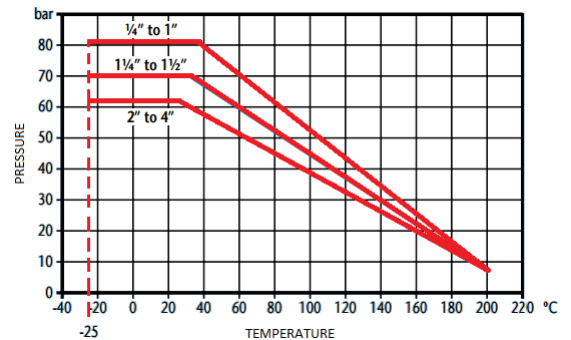
## BDE (NORTHAMPTON) LTD

# PN82 STAINLESS STEEL 'L' PORT BALL VALVE



### FEATURES

- Screwed BSP Taper
- RPTFE (15%) Seats
- PTFE/Viton seals
- Reduced Bore
- PN82 Rated
- Locking Device
- ISO 5211 Direct Mount



DN	1/4"	3/8"	1/2"	3/4"	1"	1.25"	1.5"	2"	2.5"	3"	4"
d	9.5	11	12	15	20	25	32	40	49	60	75
L	75	75	75	85	100	122	131	158	178	202	246
H	66	66	66	72	77	92	96	107	135	147	160
W	130	130	130	161	161	203	203	203	254	254	310
h	36.8	36.8	36.8	41.2	46.5	56	60	70.5	95.5	106	119
F	37.5	37.5	37.5	42.5	50	61	65.5	79	89	101	123
A	57.5	57.5	57.5	65.5	79	97	106.5	129	145	167	203
C	9	9	9	11	11	14	14	14	17	17	17
ISO 5211	F03/04	F03/04	F03/04	F04/05	F04/05	F05/07	F05/07	F05/07	F07/010	F07/010	F07/010
Torque	8	8	8	9	15	20	30	45	60	90	120
Kgs	0.70	0.67	0.63	0.94	1.39	2.91	3.66	6.31	8.95	13.11	22.10

ITEM	PART NAME	MATERIAL
1	Cap	CF8M
2	Gasket	PTFE
3	Ball	R-PTFE (15%)
4	Ball Seat	316 Stainless Steel
5	Body	CF8M
6	Stem	316 Stainless Steel
7	Thrust Washer	PTFE
8	O-Ring	Viton
9	Stem Packing	PTFE
10	Stem Ring	316 Stainless Steel
11	Belleville Washer	304 (301) Stainless Steel
12	Nut	304 Stainless Steel
13	Plate Washer	304 Stainless Steel
14	Nut Stopper	304 Stainless Steel
15	Lock Device	304 Stainless Steel
16	Handle	304 Stainless Steel
17	Handle Sleeve	Plastic
18	Stop Pin	304 Stainless Steel

### TECHNICAL DATA

- Maximum Pressure: 1/4" - 1" = 82 Bar  
1.25" - 1.5" = 69 Bar  
2" - 4" = 62 Bar
- Working Temperature: -25°C to +200°C

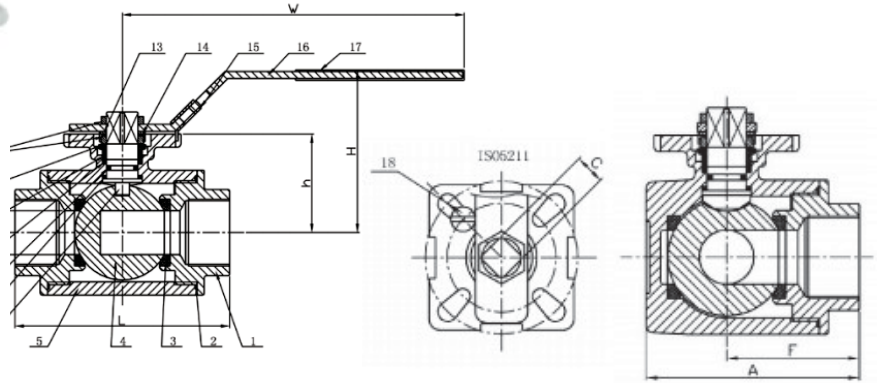
\* Raw torque with no safety added

Tel: 01604 750380  
Email: sales@bdeld.co.uk

Fax: 01604 750377  
www.bdeld.co.uk

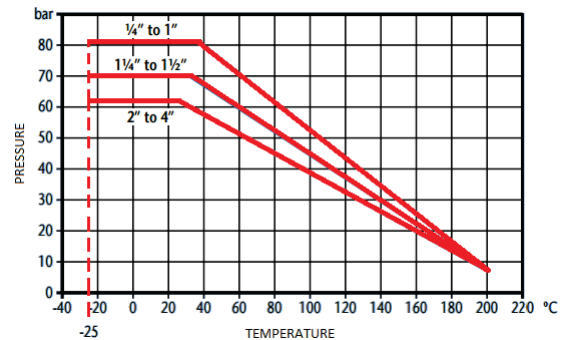

**BDE (NORTHAMPTON) LTD**

## PN82 STAINLESS STEEL 'T' PORT BALL VALVE



### FEATURES

- Screwed BSP Taper
- RPTFE (15%) Seats
- PTFE/Viton seals
- Reduced Bore
- PN82 Rated
- Locking Device
- ISO 5211 Direct Mount



DN	1/4"	3/8"	1/2"	3/4"	1"	1.25"	1.5"	2"	2.5"	3"	4"
d	9.5	11	12	15	20	25	32	40	49	60	75
L	75	75	75	85	100	122	131	158	178	202	246
H	66	66	66	72	77	92	96	107	135	147	160
W	130	130	130	161	161	203	203	203	254	254	310
h	36.8	36.8	36.8	41.2	46.5	56	60	70.5	95.5	106	119
F	37.5	37.5	37.5	42.5	50	61	65.5	79	89	101	123
A	57.5	57.5	57.5	65.5	79	97	106.5	129	145	167	203
C	9	9	9	11	11	14	14	14	17	17	17
ISO 5211	F03/04	F03/04	F03/04	F04/05	F04/05	F05/07	F05/07	F05/07	F07/010	F07/010	F07/010
Torque	8	8	8	9	15	20	30	45	60	90	120
Kgs	0.70	0.67	0.63	0.94	1.39	2.91	3.66	6.31	8.95	13.11	22.10

ITEM	PART NAME	MATERIAL
1	Cap	CF8M
2	Gasket	PTFE
3	Ball	R-PTFE (15%)
4	Ball Seat	316 Stainless Steel
5	Body	CF8M
6	Stem	316 Stainless Steel
7	Thrust Washer	PTFE
8	O-Ring	Viton
9	Stem Packing	PTFE
10	Stem Ring	316 Stainless Steel
11	Belleville Washer	304 (301) Stainless Steel
12	Nut	304 Stainless Steel
13	Plate Washer	304 Stainless Steel
14	Nut Stopper	304 Stainless Steel
15	Lock Device	304 Stainless Steel
16	Handle	304 Stainless Steel
17	Handle Sleeve	Plastic
18	Stop Pin	304 Stainless Steel

### TECHNICAL DATA

- Maximum Pressure: 1/4" - 1" = 82 Bar  
1.25" - 1.5" = 69 Bar  
2" - 4" = 62 Bar
- Working Temperature: -25°C to +200°C

\* Raw torque with no safety added

Tel: 01604 750380  
Email: sales@bdeltd.co.uk

Fax: 01604 750377  
www.bdeltd.co.uk